



climbslide 8.9
moveart playsculptures®





Playsculpture climbslide 8.9

While adults will appreciate «climbslide 8.9» as an aesthetically designed play sculpture, children will see it as a small world full of adventures. Whether in the large or small version, «climbslide 8.9» guarantees not only fun but also encounters and movement. For children from 2 years

Design:

All objects originate from a single form – the so-called double helix, the form of the DNA strands of all living things. They thus have an energising and harmonising effect on people and the environment.

Material:

All products are constructed using 100% ecological and sustainable Accoya wood, and have a minimum outdoor life span of 25 years. They are low-maintenance and resistant to vandalism.

Safety:

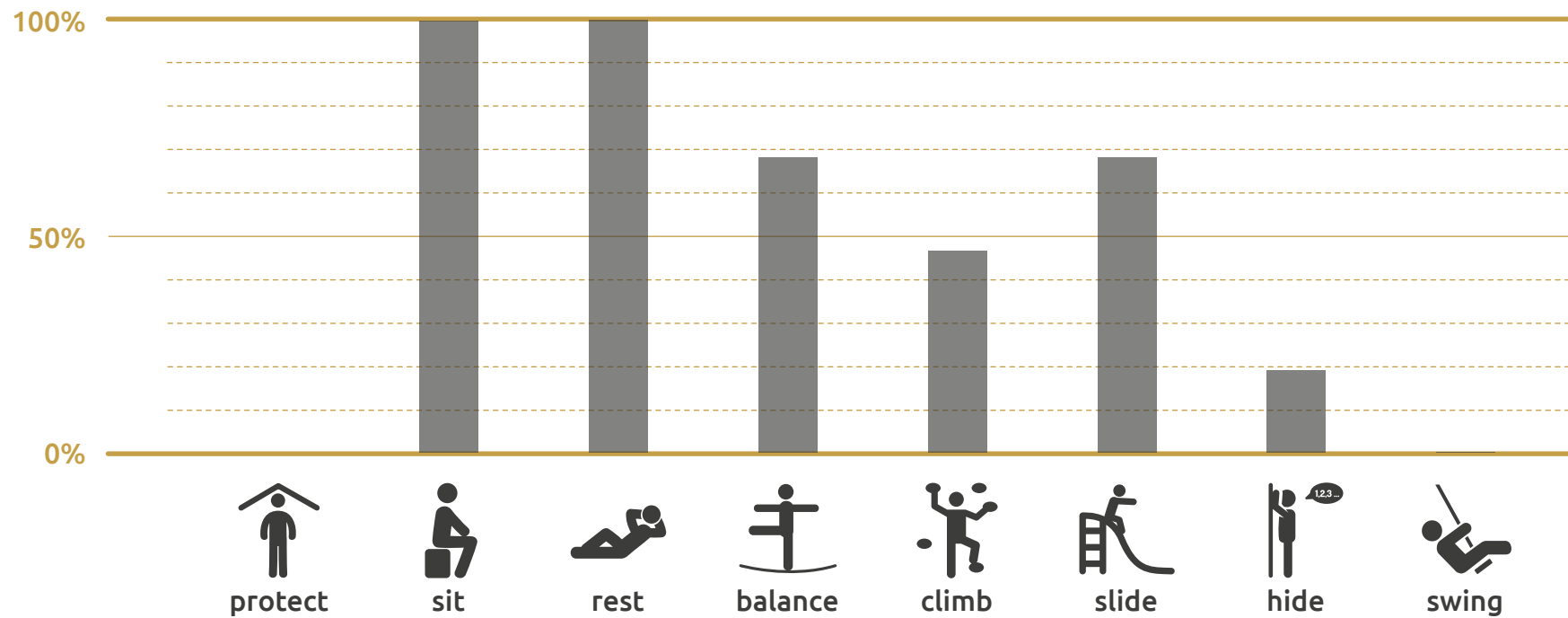
All objects are manufactured according to European safety standards for playground equipment SN EN 1176.

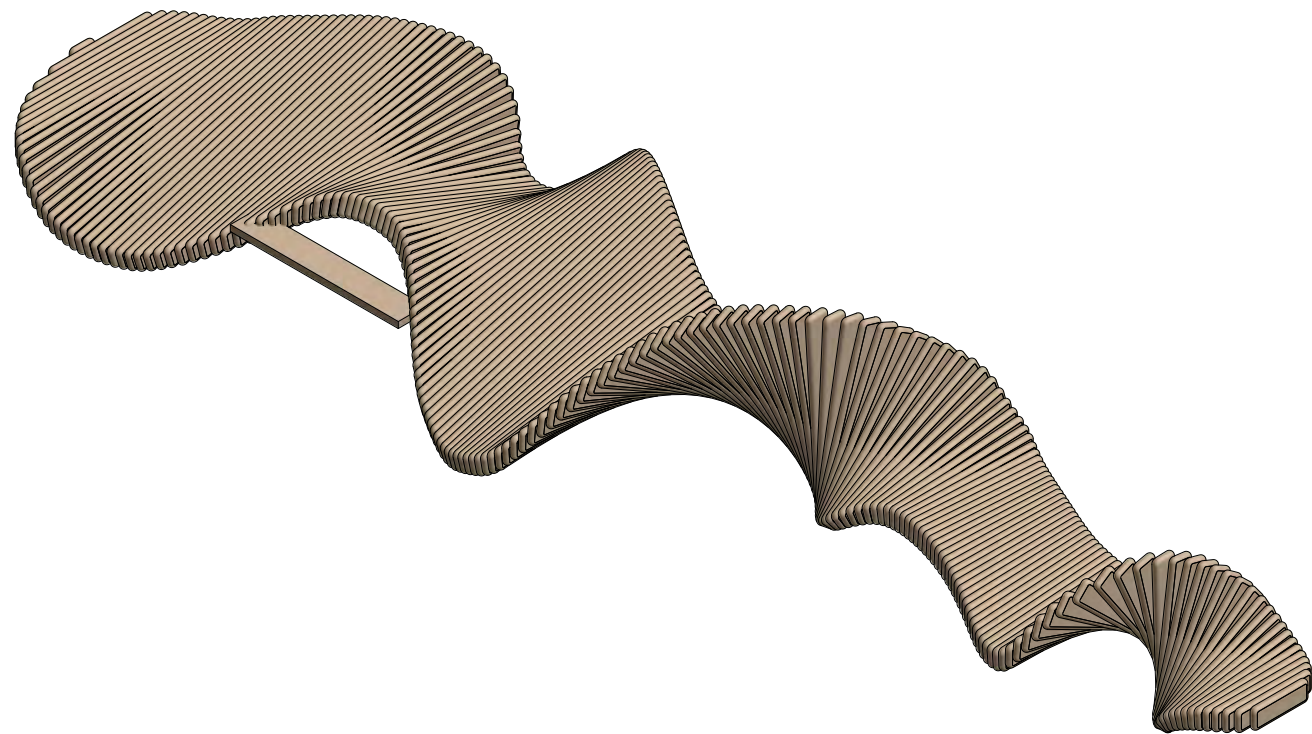
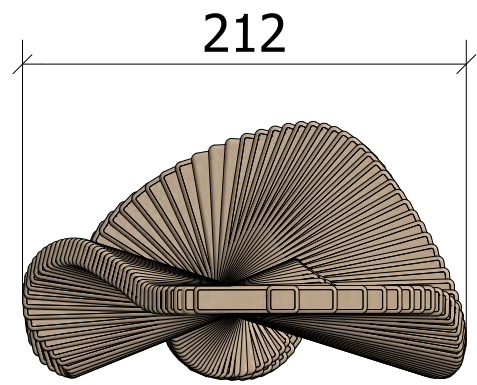
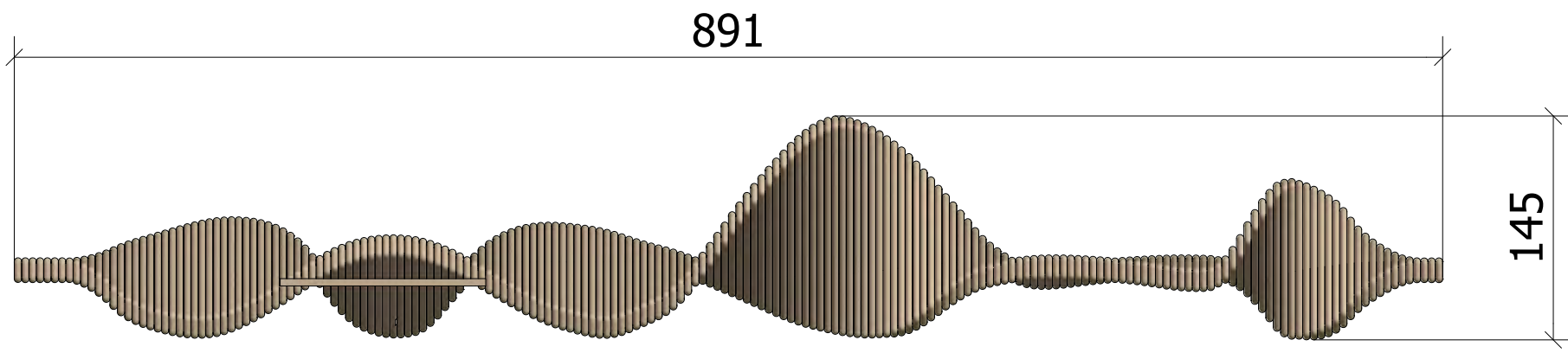
Tech. Specifications:

Length: 891 cm
Width: 212 cm
Height: 145 cm
Weight: 1300 kg
Critical fall height: 145 cm
Number of foundations: 5
Construction time (approx.):
4 pers. à 4 hrs.
Crane required



THE HUMAN IGNITION PROFILE (HIP)





move art

moveART GmbH

Zürcherstrasse 8
CH-4143 Dornach

T +41 76 792 95 46

info@moveart.swiss
www.moveart.swiss