

The equipment must be checked for correct operation and safety, especially the points listed below:

Proof of maintenance

Function

1. Make sure the pump mechanism moves smoothly.
2. Check water hoses for wear and tear; replace if necessary. To do this, loosen lid bolts (Allen key No. 4) and remove upper part including pump mechanism.
3. Clean sieve of pressure reduction valve if soiled.

Valve and cartridge

4. When replacing the entire valve or the cartridge, pump several times until the automatic shutoff engages (if necessary, shut off the water several times and then turn on again).

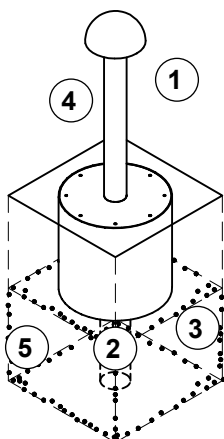
- ## Structural stability

5. Check anchoring to the ground every 12 months, retighten screws and bolts if necessary.

Note

Prior to the start of the frost period, turn off water supply and remove the mushroom pump. It is necessary to remove at least the upper part. If the housing part is to remain on site, close it with the winter lid.

If a programmable rinsing device (**No. 5.18032**) is fitted, the time switch is particularly vulnerable to frost damage as it cannot be drained. Therefore, it is imperative the pump be dismantled. Store the pump protected from frost.



Special notes, e.g. for repairs

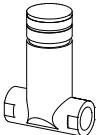
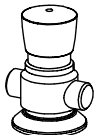


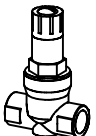

Repair not carried out, it is still possible to play on equipment

**Repair not carried out,
equipment is taken out of action**

**All work carried out,
everything is in order**

Maintenance carried out by:

Date _____

Spare parts Mushroom Column Spring Order No. 5.18030 / 5.18032	Please note that the safety standards of the equipment must not be affected. Therefore, when carrying out repairs it is helpful to only use original parts .
Order No. Spare parts	
0.97833 Self-righting pressure valve (valid until June 2022) <i>please request repair instructions for replacement</i> 	
0.97832 Self-righting pressure valve (valid from July 2022) <i>please request repair instructions for replacement</i> 	
0.97834 Replacement cartridge for self-righting <i>please request repair instructions for replacement</i> 	
0.97835 Connecting hose with hose protection 	
0.97836 Pressure reducer 	
0.97837 Seal for hose connection 	
0.97840 Winter lid 